



by PACIFIC ARCHITECTURAL MILLWORK

Tilt-Turn W6400

(rev. 02.06.18)

Copyright © 2018 Reveal Windows & Doors
All rights reserved. No part of this manual may be reproduced or transmitted in any
form or by any means without permission by Reveal Windows & Doors.

Tilt-Turn W6400

Section Contents

Section Contents	1
Product Overview	2
Introduction	2
Wood Species	2
Glazing Options	2
Other Options	2
Product Parameters	3
Exterior Elevation	4
Vertical Section	5
Plan Section	6
Head Detail	7
Sill Detail	8
Left Jamb Detail	9
Right Jamb Detail	10

Product Overview

Introduction

We are proud to add the flexible and stylish Tilt-Turn W6400 (all-wood) to our product line. Popularized in Europe, the Tilt-Turn W6400 opens to the interior like a casement window when the handle is rotated 90 degrees, or tilts in slightly when the handle is rotated 180 degrees. The tilt position allows for gentle circulation during inclement weather, while the swing position allows for convenient cleaning and maximum airflow. Multiple lock points provide added stability and security, and the durable hardware allows for oversized applications. Our Tilt-Turn W6400 can be customized with screens, glazing options, and various hardware finishes.



Wood Species

Our standard wood species are the following:



The mark of responsible forestry

- Pine
- Vertical Grain Douglas Fir
- African Mahogany

Alternative and exotic wood species are also available. See the Wood Species page in the General Info section.

Other Options

The Tilt-Turn W6400 can be purchased with additional options such as custom grille patterns, fixed exterior screen and brick or stucco exterior moulding.

Contact Reveal Windows & Doors for additional options and customization.

Glazing Options

Standard glazing for the Tilt-Turn W6400 is 1" overall insulated glass.

Custom glazing and tinted glass are available.

Tilt-Turn W6400

(rev. 02.06.18)

Product Parameters

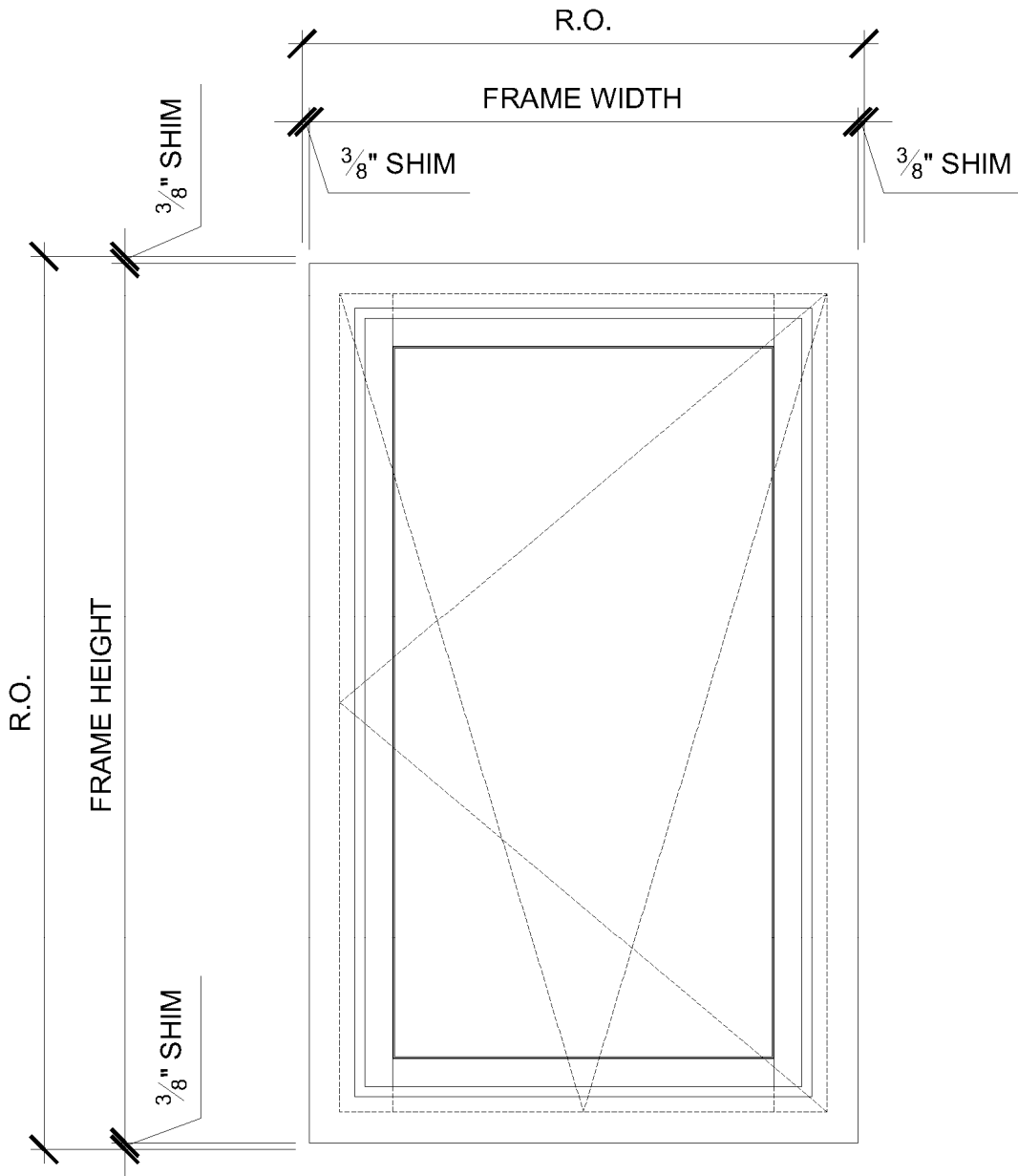
Min Frame Height	23-1/2" (Based on width)
Max Frame Height	98"
Min Frame Width	23-1/2"
Max Frame Width	48"
Min Stile Width	3"
Min Jamb Depth	2-1/2"
Edge Detail	<ul style="list-style-type: none"> Interior/Exterior: Traditional or Contemporary edge detail

Hardware Images

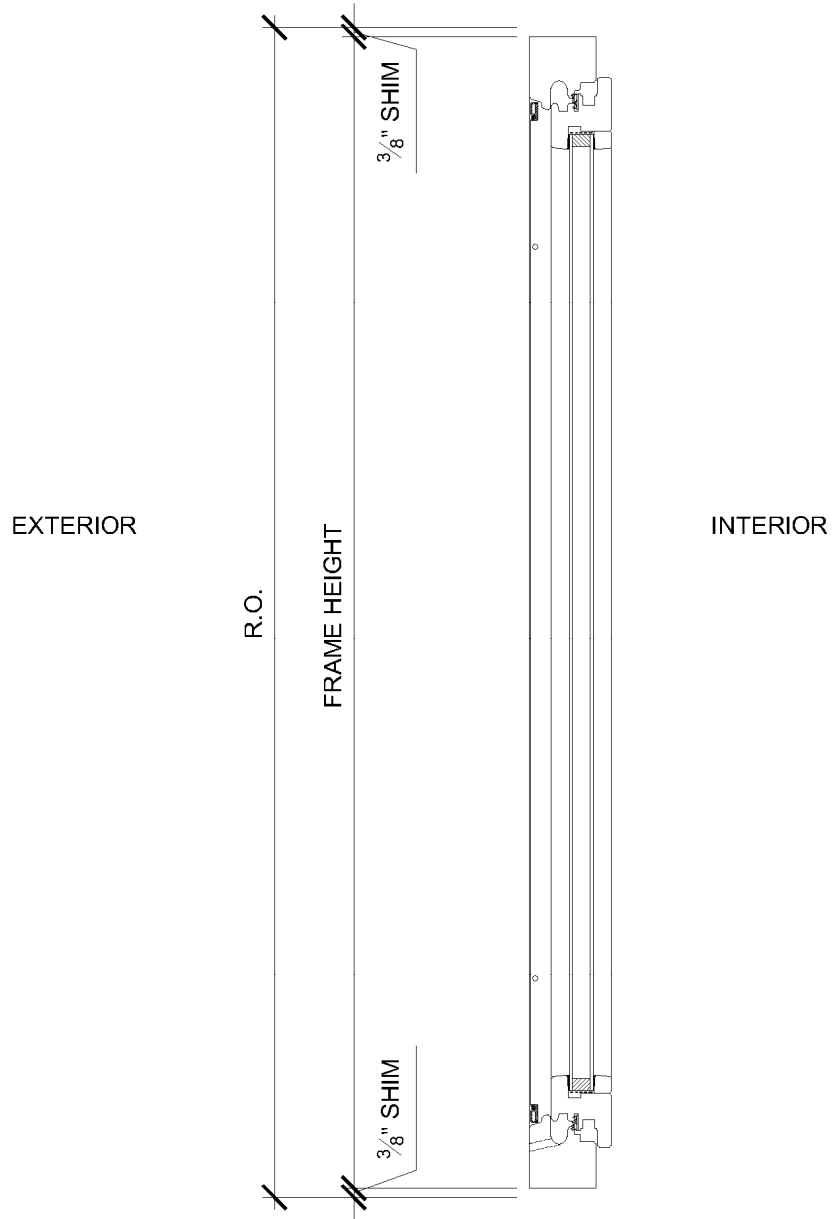
	
London Handle (Standard)	Verona Handle
<ul style="list-style-type: none"> Silver Grey Brown Traffic White 	<ul style="list-style-type: none"> Polished Brass Antique Brass Brushed Chrome Polished Chrome Oil-Rubbed Brass Pure White Matte Black Satin Nickel Antique Nickel

Custom hardware and handles are also available.

Exterior Elevation

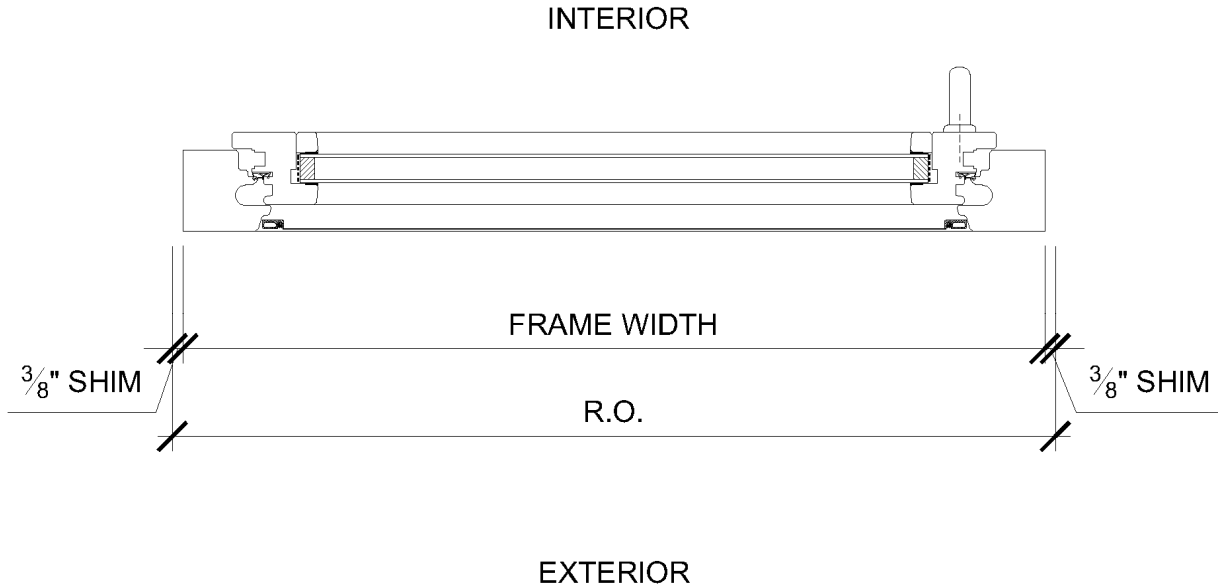


Vertical Section



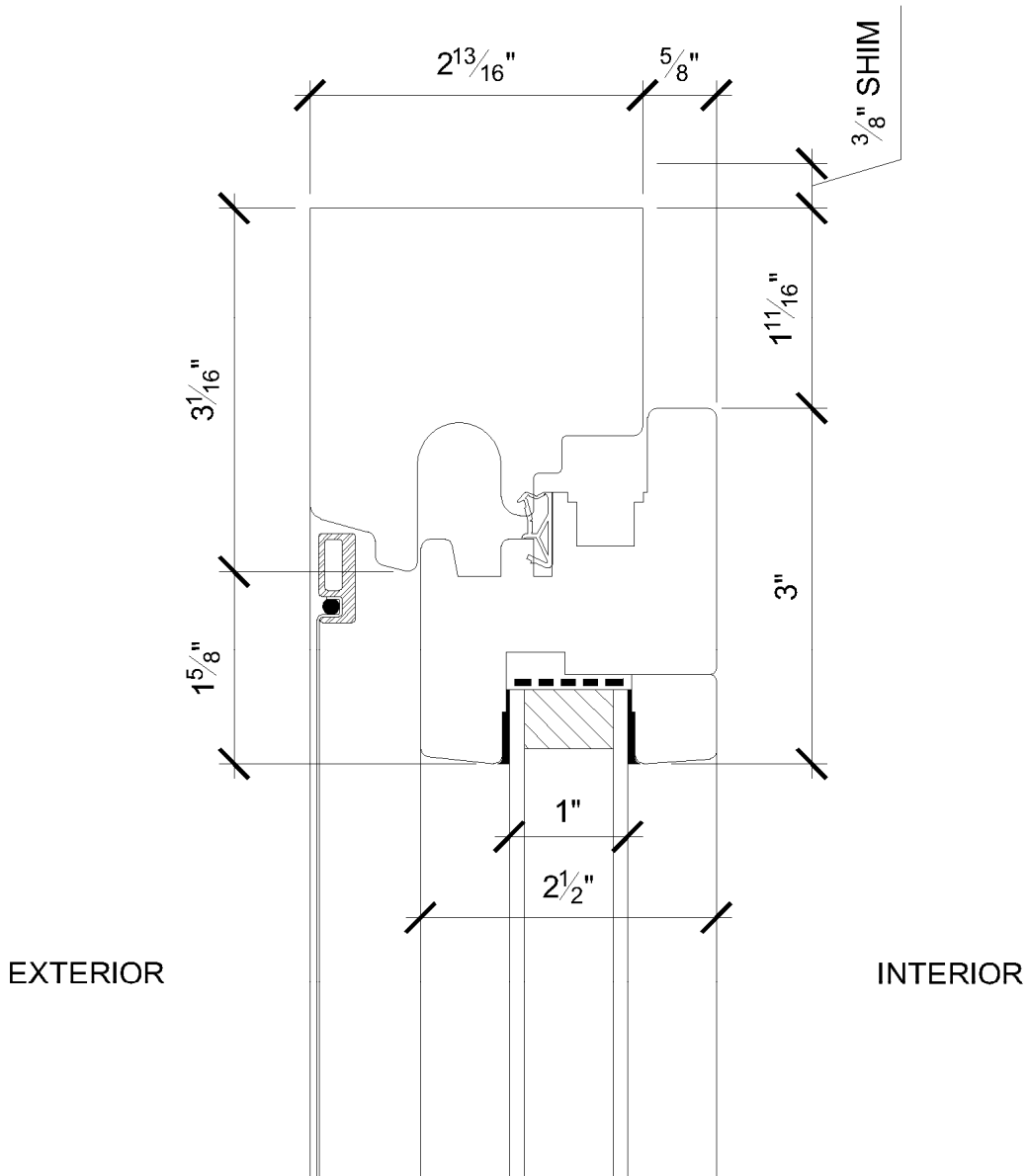
NOTE: SHOWN WITH OPTIONAL SCREEN

Plan Section

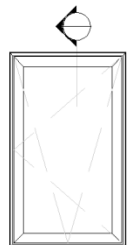


NOTE: SHOWN WITH OPTIONAL SCREEN

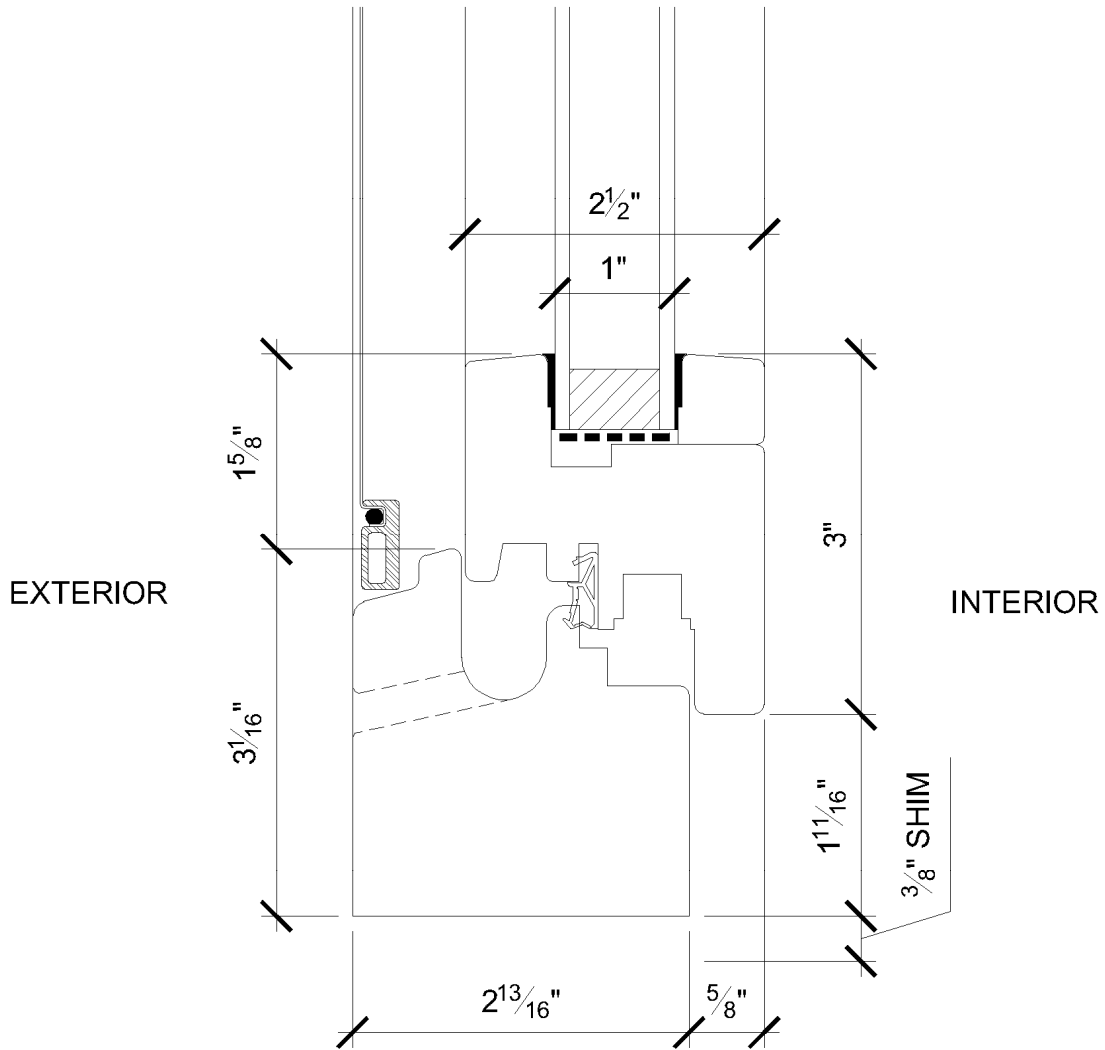
Head Detail



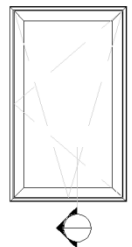
NOTE: SHOWN WITH OPTIONAL SCREEN



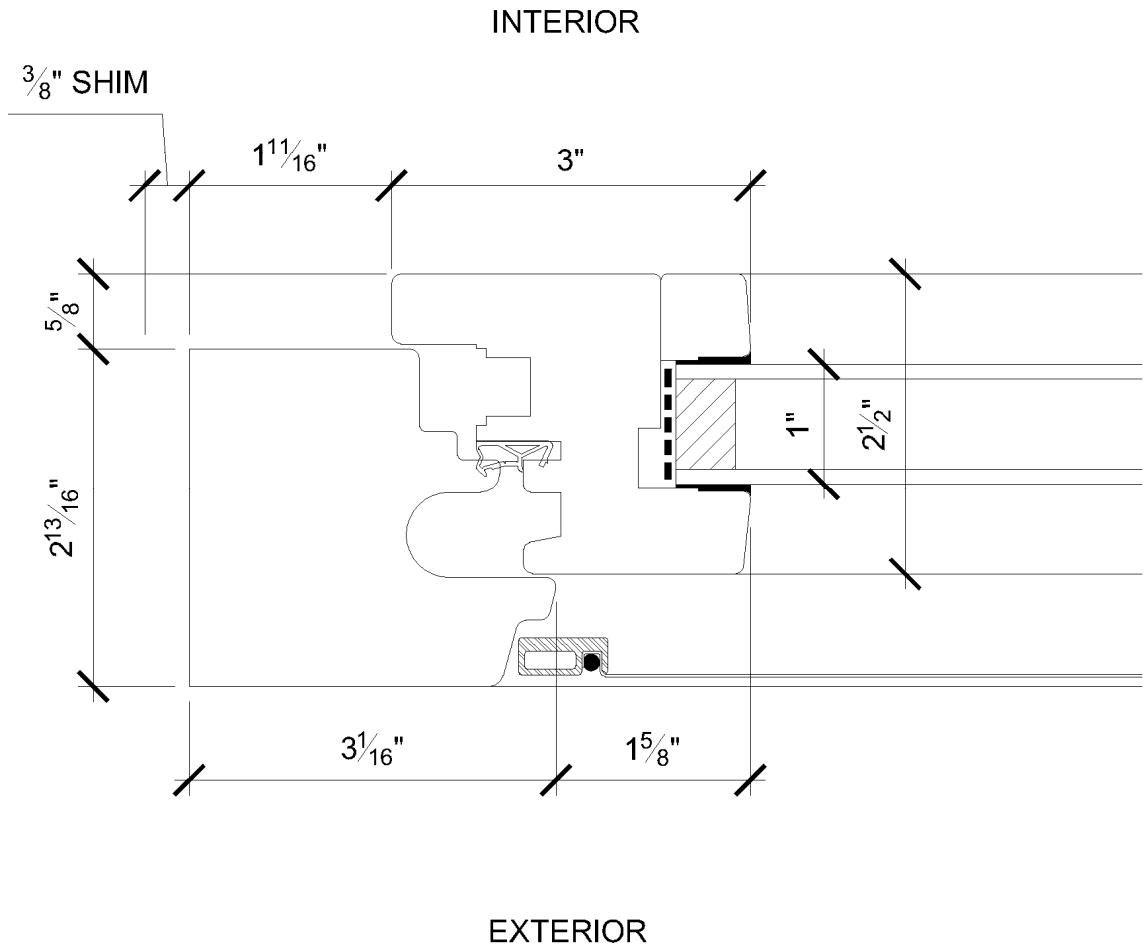
Sill Detail



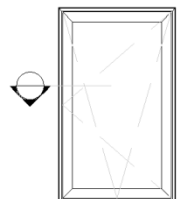
NOTE: SHOWN WITH OPTIONAL SCREEN



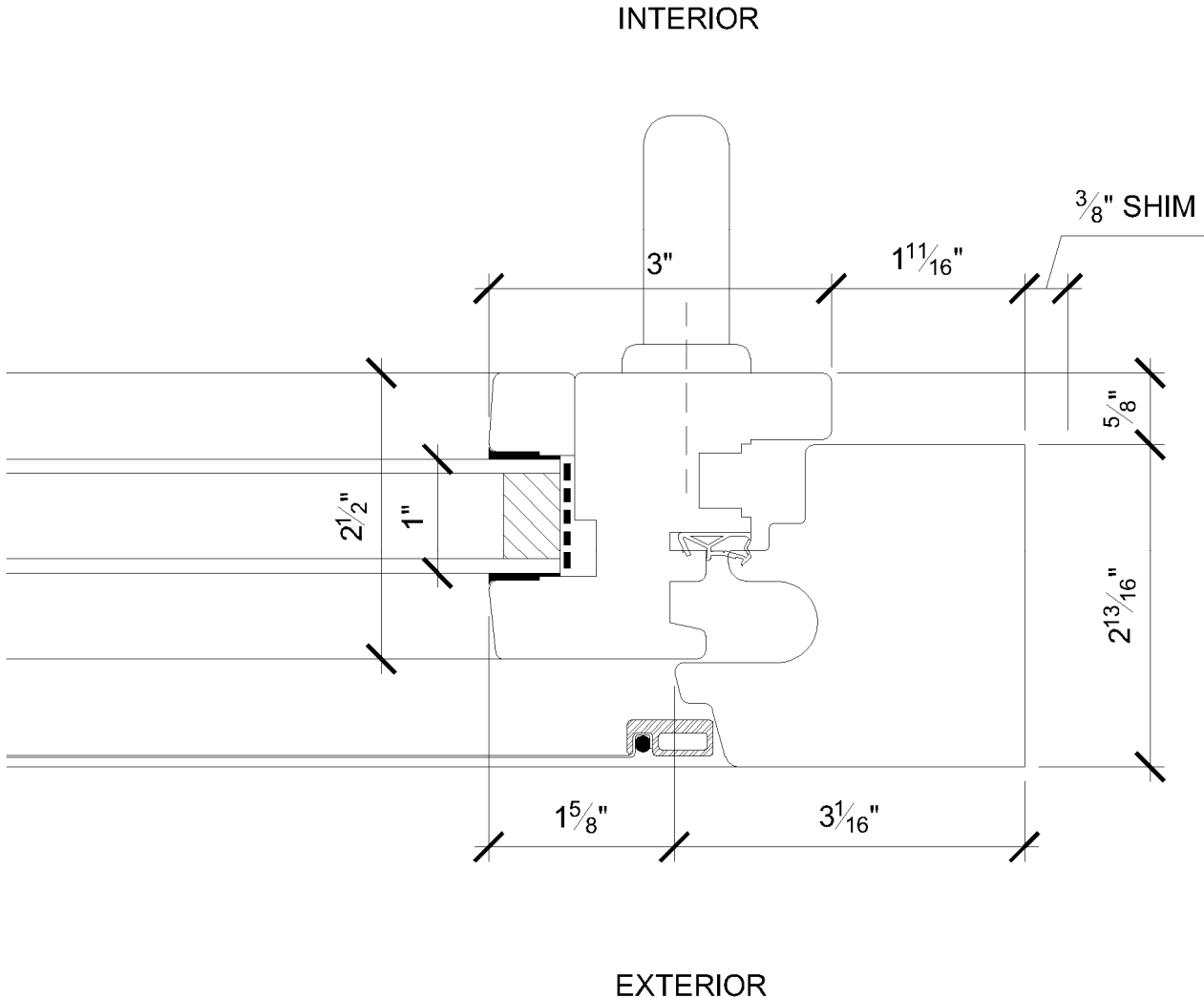
Left Jamb Detail



NOTE: SHOWN WITH OPTIONAL SCREEN



Right Jamb Detail



NOTE: SHOWN WITH OPTIONAL SCREEN

