



by PACIFIC ARCHITECTURAL MILLWORK

French Tilt Turn W6400

(rev. 02.06.18)

Copyright © 2018 Reveal Windows & Doors
All rights reserved. No part of this manual may be reproduced or transmitted in any
form or by any means without permission by Reveal Windows & Doors.

French Tilt-Turn W6400

Section Contents

Section Contents	1
Product Overview	2
Introduction	2
Wood Species	2
Glazing Options	2
Other Options	2
Product Parameters	3
Hardware Images	3
Exterior Elevation	4
Vertical Section	5
Plan Section	6
Head Detail	7
Sill Detail	8
Left Jamb Detail	9
Joining Stile Detail	10
Right Jamb Detail	11

Product Overview



Introduction

A pair of wood tilt-turn windows are combined in one frame to create the French Tilt-Turn W6400, which capitalizes on this system's ability to swing inward like a casement, or tilt in slightly from the top. The French Tilt-Turn W6400 configuration removes the center vertical mullion to maximize light visibility when both sashes are fully open, and it retains the ability to tilt one panel inward for gentle circulation during inclement weather. Multiple locking points provide added stability and security, and the durable hardware allows for oversized applications. The French Tilt-Turn W6400 can be customized with screens, glazing options, and various hardware finishes for the perfect look.

Wood Species

Our standard wood species are the following:



The mark of
responsible forestry

- Pine
- Vertical Grain Douglas Fir
- African Mahogany

Alternative and exotic wood species are also available. See the Wood Species page in the General Info section.

Other Options

The French Tilt-Turn can be purchased with additional options such as custom grille patterns and exterior trim.

Contact Reveal Windows & Doors for additional options and customization.

Glazing Options

Standard glazing for the French Tilt-Turn W6400 is 1" overall insulated glass.

Custom glazing and tinted glass are available.

French Tilt-Turn W6400

(rev. 02.06.18)

Product Parameters

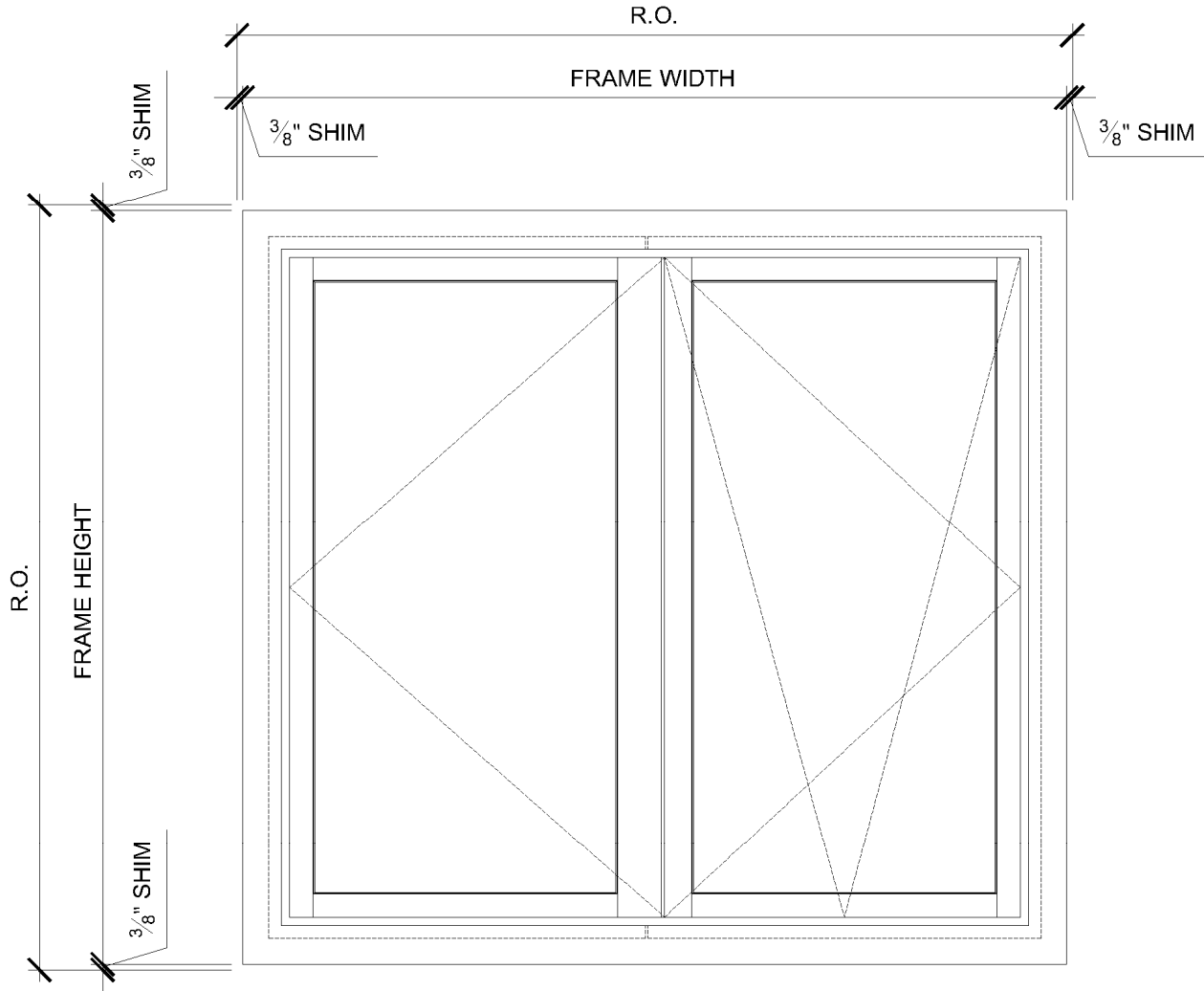
Min Frame Height	23-1/2"
Max Frame Height	98"
Min Frame Width	43"
Max Frame Width	92"
Min Stile Width	3"
Min Jamb Depth	2-1/2"
Edge Detail	<ul style="list-style-type: none"> Interior/Exterior: Traditional or Contemporary edge detail

Hardware Images

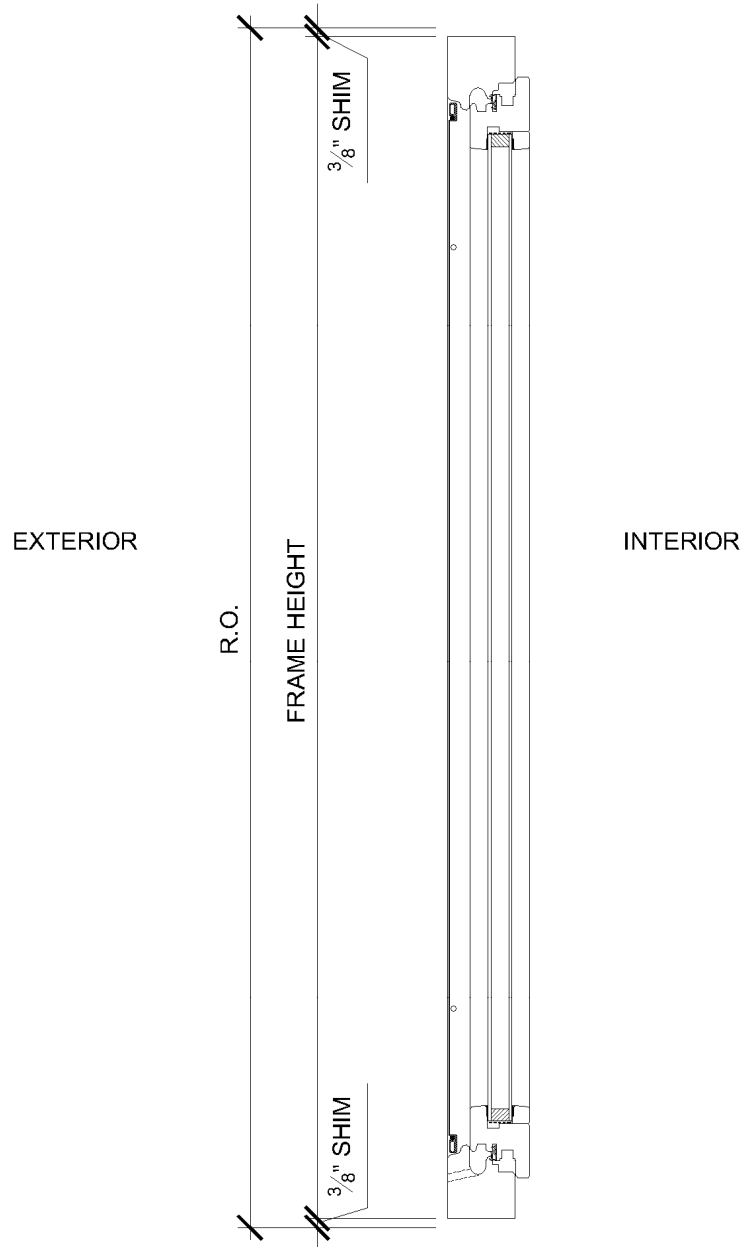
	
London Handle (Standard)	Verona Handle
<ul style="list-style-type: none"> Silver Grey Brown Traffic White 	<ul style="list-style-type: none"> Polished Brass Antique Brass Brushed Chrome Polished Chrome Oil-Rubbed Brass Pure White Matte Black Satin Nickel Antique Nickel

Custom hardware and handles are also available.

Exterior Elevation

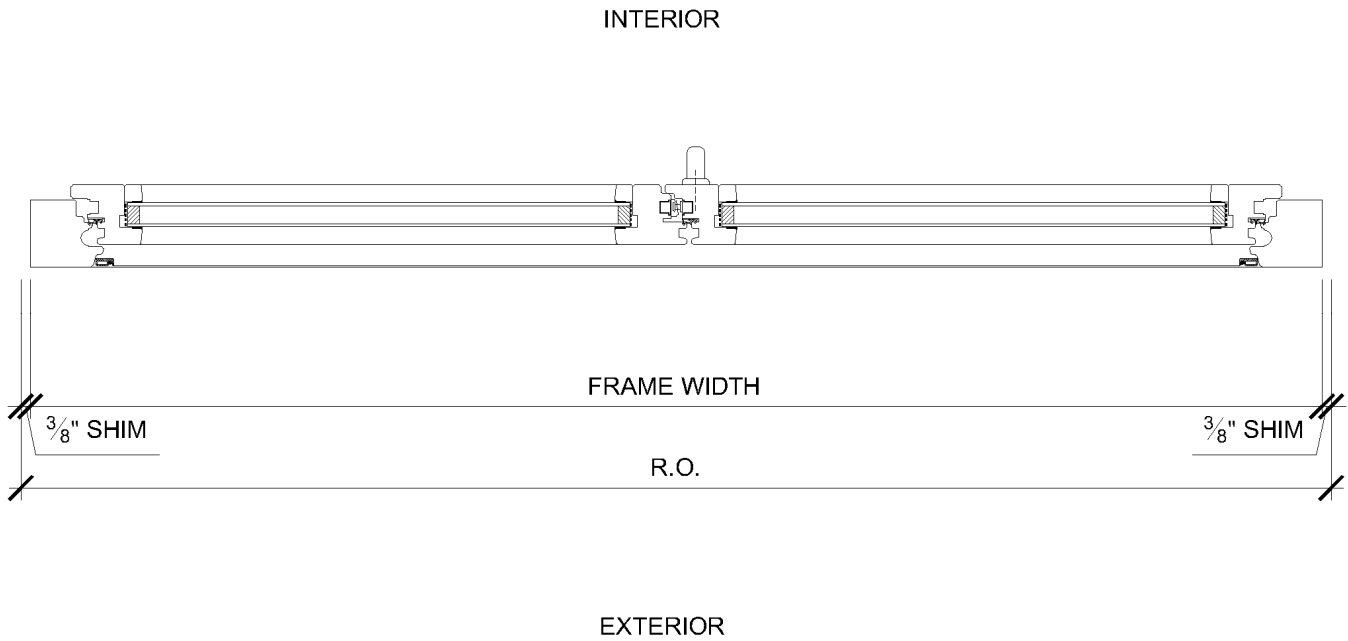


Vertical Section



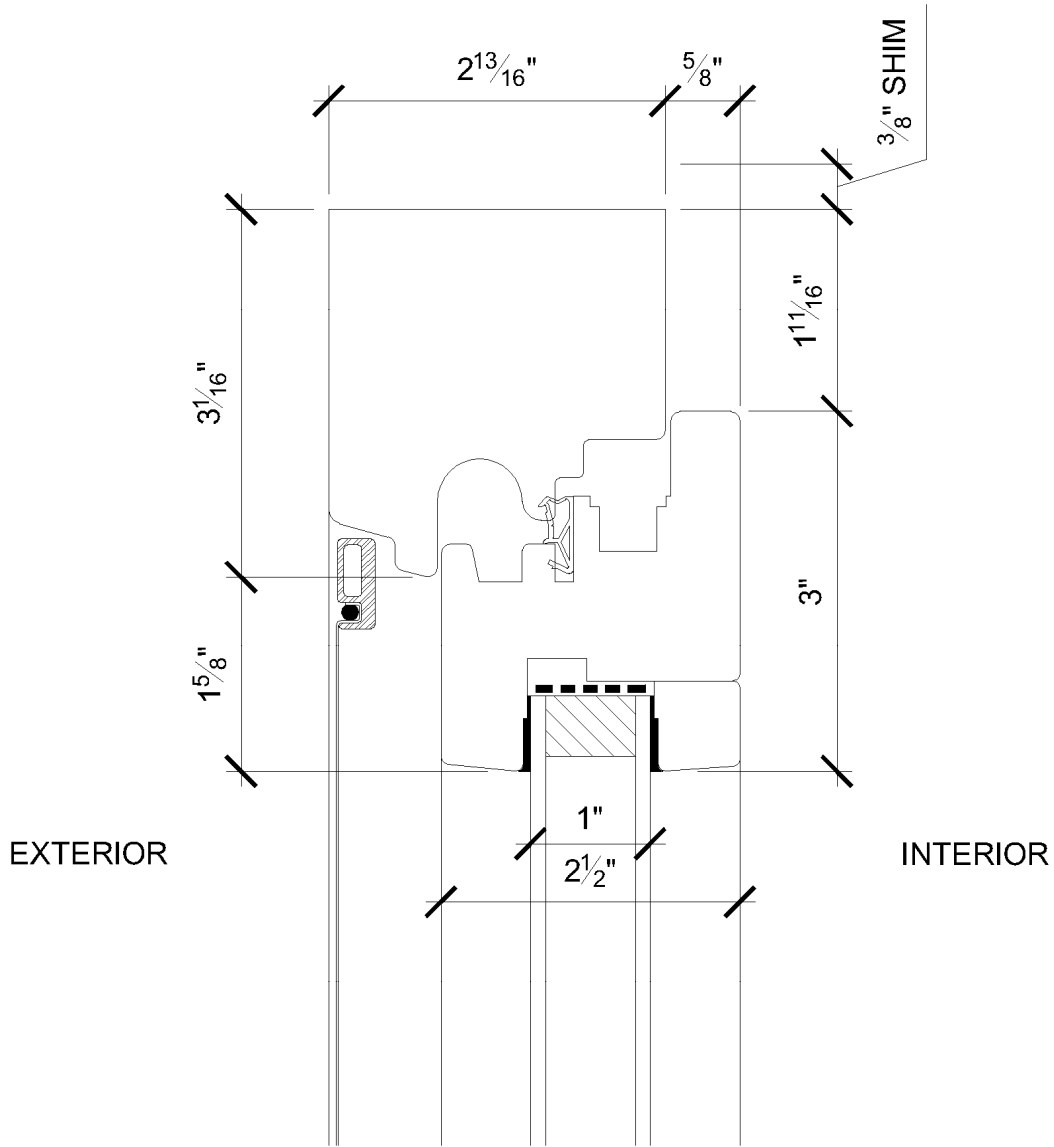
NOTE: SHOWN WITH OPTIONAL SCREEN

Plan Section

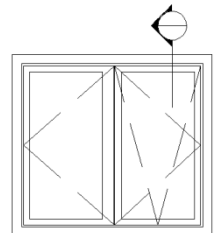


NOTE: SHOWN WITH OPTIONAL SCREEN

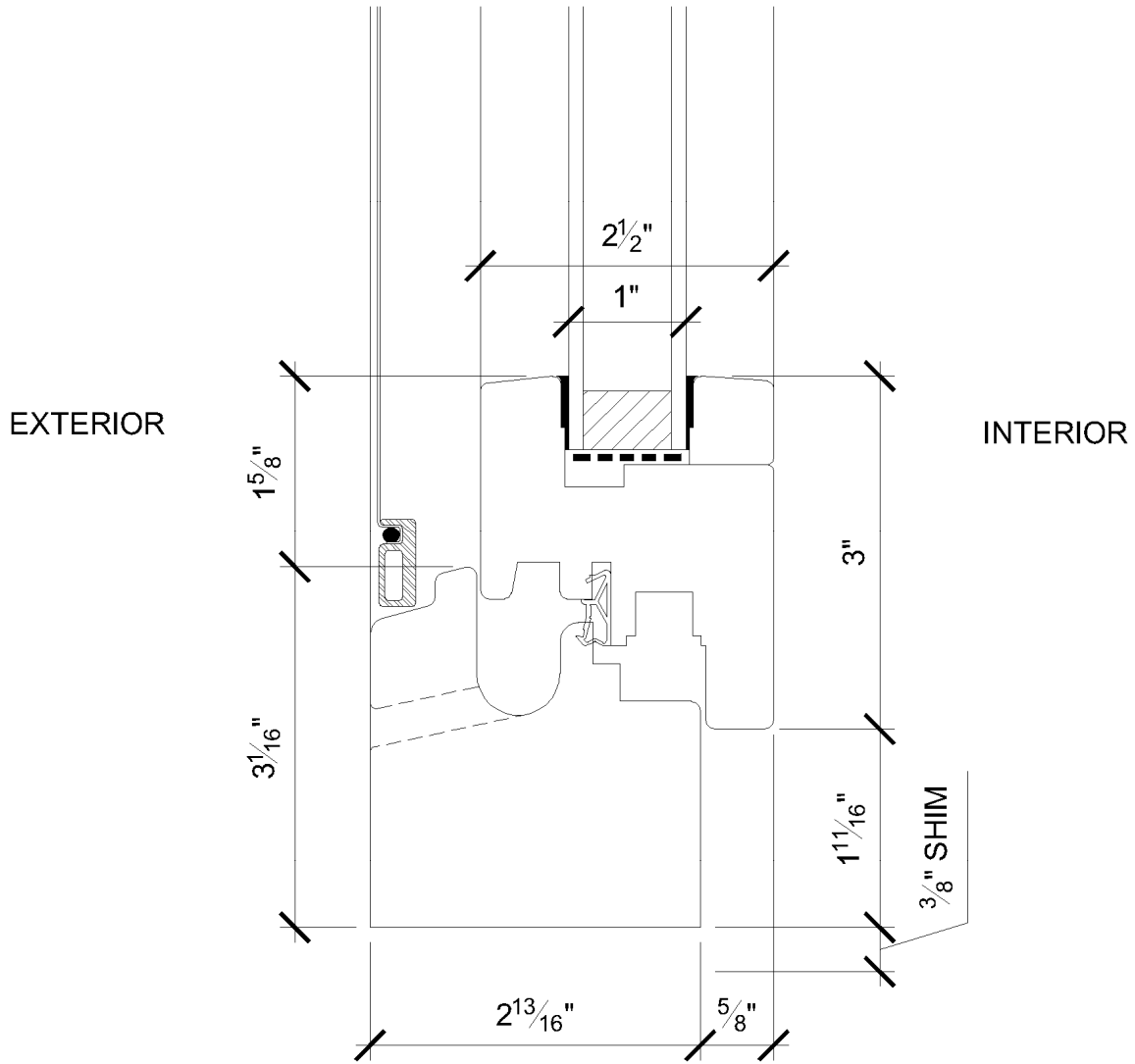
Head Detail



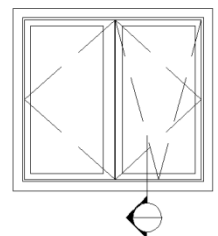
NOTE: SHOWN WITH OPTIONAL SCREEN



Sill Detail

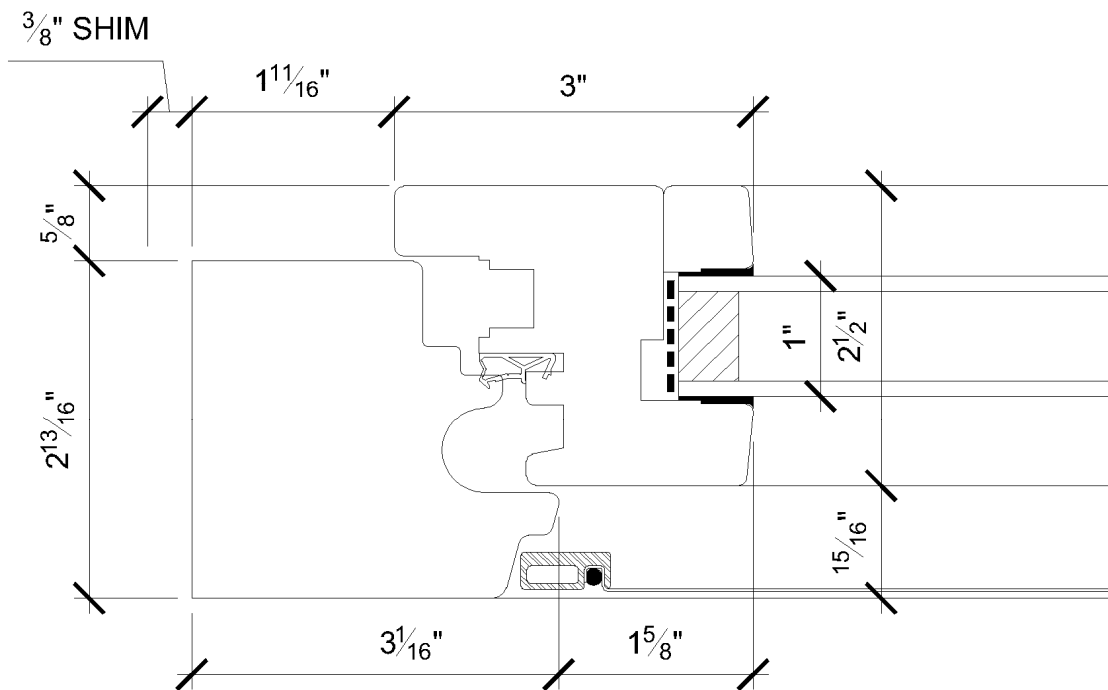


NOTE: SHOWN WITH OPTIONAL SCREEN



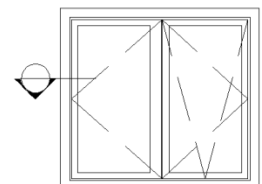
Left Jamb Detail

INTERIOR



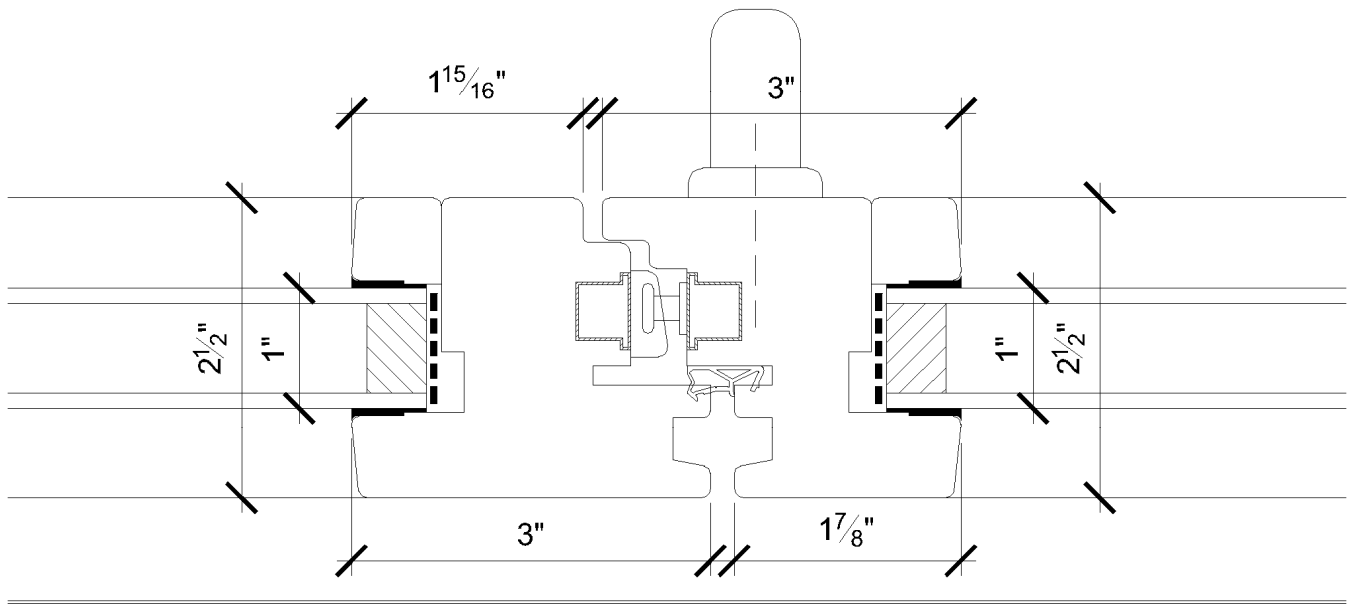
EXTERIOR

NOTE: SHOWN WITH OPTIONAL SCREEN



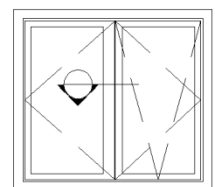
Joining Stile Detail

INTERIOR

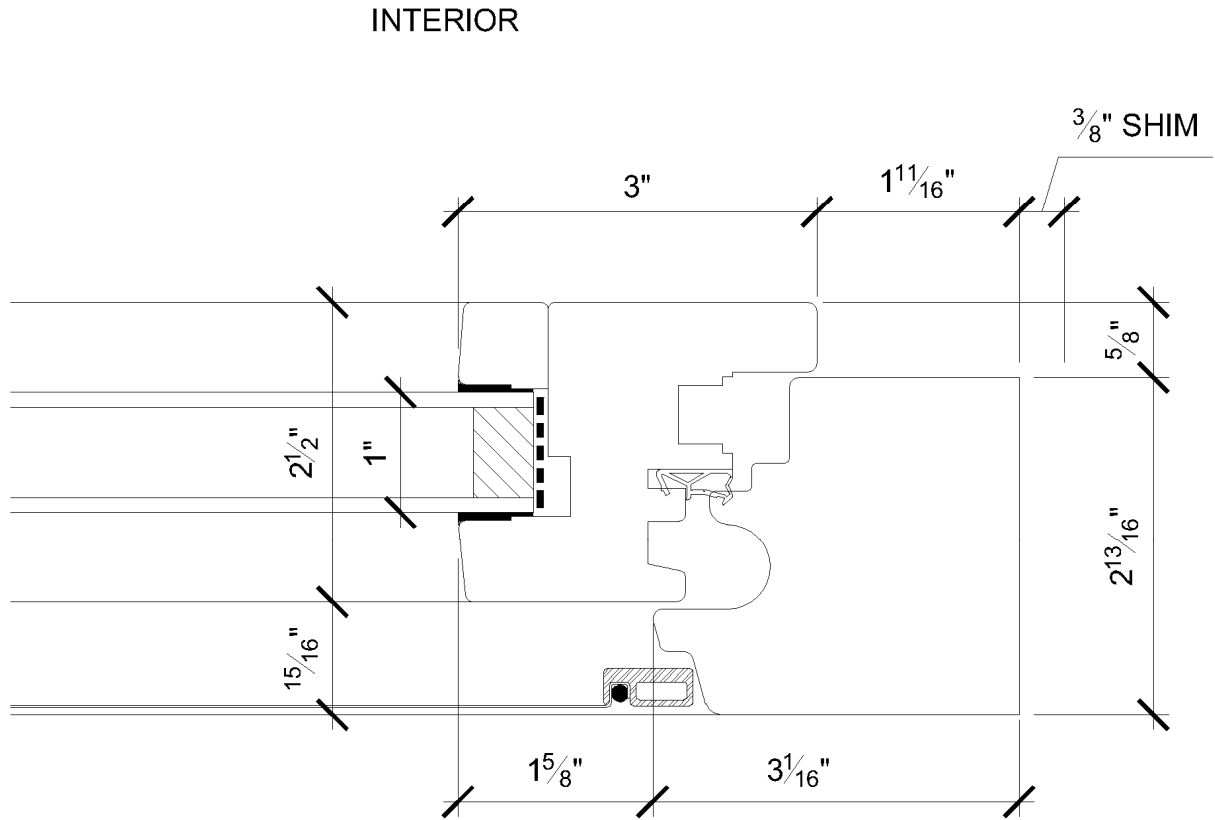


EXTERIOR

NOTE: SHOWN WITH OPTIONAL SCREEN



Right Jamb Detail



EXTERIOR

NOTE: SHOWN WITH OPTIONAL SCREEN

